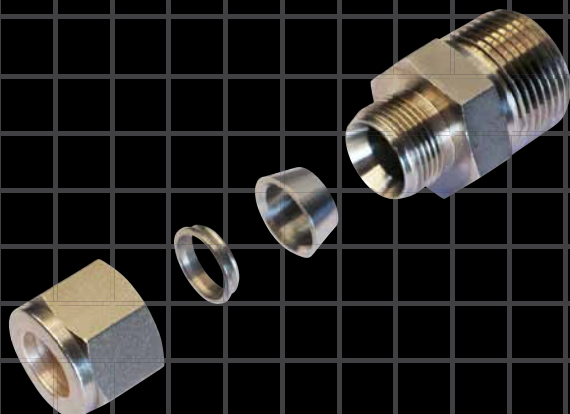
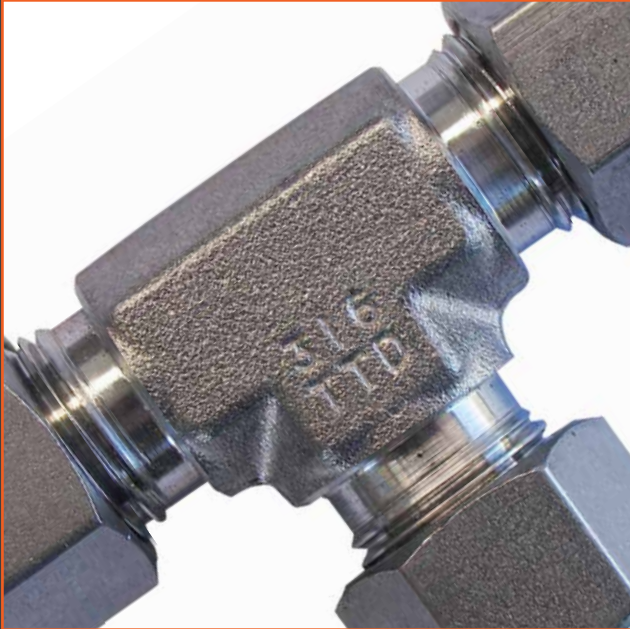
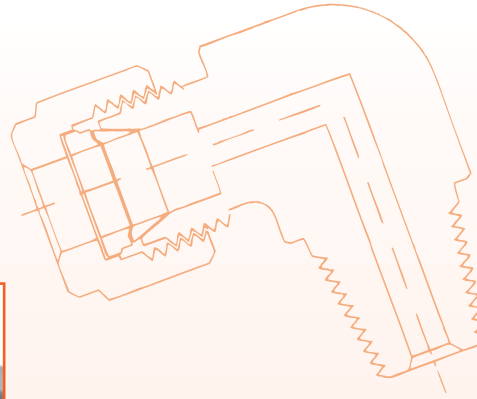


TUBE COMPRESSION FITTINGS

TWIN-LOK®



**AUSTRALIAN
PIPELINE VALVE®**

www.australianpipelinevalve.com.au

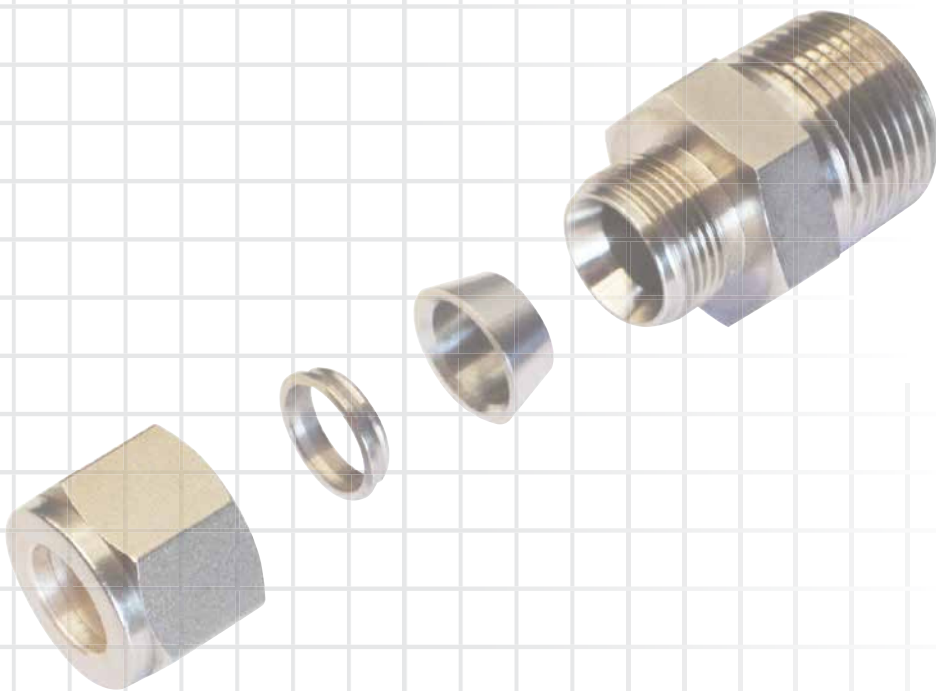
QUALITY VALVE MANUFACTURER

QUALITY COMMITMENT

Quality is Our First Priority.

Consistent product quality and a proven track record makes Australian Pipeline Valve a dependable choice for cast Gate, Globe and Check Valves, where total reliability is the number one concern.

Since its founding, APV's philosophy has been focused on quality. Our valves are manufactured in full compliance to worldwide standards (such as ASME, ANSI, API 6D, API 600, EN, ISO, BS, AS).



**AUSTRALIAN
PIPELINE VALVE®**

70-78 Stanbel Road Salisbury Plain South Australia 5109
Telephone +61 (0)8 8285 0033 Fax +61 (0)8 8285 0044
email: admin@australianpipelinevalve.com.au

CONTENTS

Twin Ferrule Tube Compression Fittings Overview	4
Male Connector and Bulkhead Male Connector	5
Male Elbow	7
Male Run Tee	8
Female Connector	9
Bulkhead Female Connector and Female Elbow	10
Female Run Tee and Female Branch Tee	11
Union Tee and Union	12
Reducing Union	13
Bulkhead Union and Union Elbow	14
Reducer	15
Male Adaptor and Female Adaptor	16
Nut, Back Ferrule and Front Ferrule	17
Hex Nipple, Hex Long Nipple and Hex Reducing Nipple	18
Adaptor, Reducing Adaptor and Reducing Bushing	19
Hex Coupling and Hex Reducing Coupling	20
Pipe Plug	20



© Copyright Australian Pipeline Valve 1990 - 2020 Edition

Catalogues, photos, brochures and technical publications are the exclusive property of Australian Pipeline Valve. Any unauthorised reproduction in total or in part, shall result in prosecution. Products and data sheets in this publication are subject to change at anytime without notice. Australian Pipeline Valve reserves the right to carry out amendments to products and materials.

TWIN FERRULE TUBE COMPRESSION FITTINGS

CORROSION RESISTANT

Ferrules have a very strong corrosion resistance because of the special hardening process used in manufacturing.

INTERCHANGEABLE

Tube Fittings are interchangeable with market leaders with full Ferrule and nut interchangeability.

GAUGEABLE

Tube Fittings are manufactured in accordance with exacting tolerances which ensure a quality Tube Fitting.

CERTIFICATION

Twin-lok Tube Fittings are all batch tested and have been design tested for leakage. Full material certification can be supplied.

FEATURES

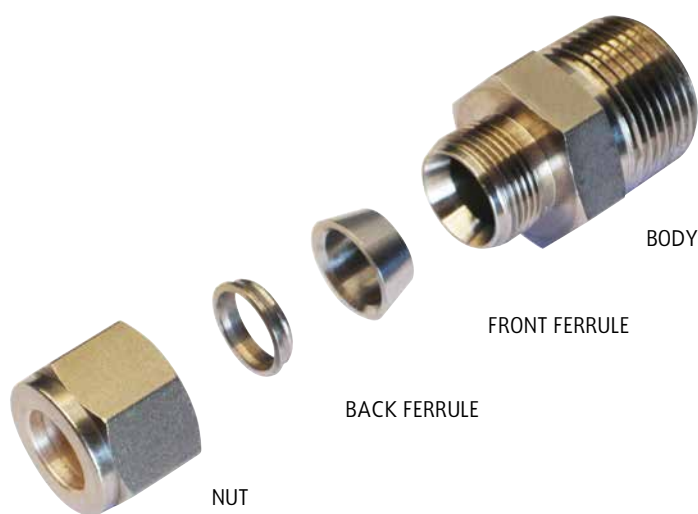
Twin-Lok compression Tube Fittings are manufactured to meet the specifications required for a wide range of applications in hydraulic, chemical, process control, petrochemical and instrumentation. The tube fittings are composed of four parts: body, front ferrule, back ferrule and nut. The twin-ferrule design compensates for any tolerances in tube O.D., wall thickness, material hardness and assures leak-proof connections.

MATERIAL

Tube fittings are available as standard in 316 Stainless Steel. Straight fittings are machined from bar stock & shaped bodies from forgings.

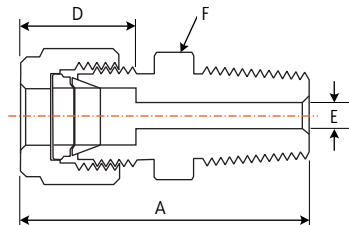
DIMENSIONS

Tube fittings are supplied in metric and fractional sizes from 6mm to 25mm or 1/8" to 1" available with NPT, BSPT and BSPP threads.



*Twin ferrule tube fittings (also available in single ferrule style)
Fully interchangeable with both Market Leaders*

MALE CONNECTOR



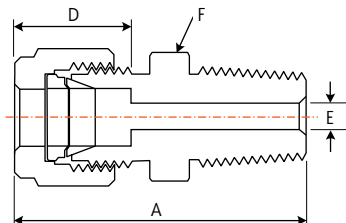
DIMENSIONS

Tube O.D. IN	NPT Thread IN	A	D	E	F
Inches					
1/8	1/8	1.20	0.50	0.09	7/16
1/8	1/4	1.40	0.50	0.09	9/16
1/8	3/8	1.41	0.50	0.09	11/16
1/8	1/2	1.66	0.50	0.09	7/8
1/4	1/8	1.29	0.60	0.19	1/2
1/4	1/4	1.49	0.60	0.19	9/16
1/4	3/8	1.51	0.60	0.19	11/16
1/4	1/2	1.76	0.60	0.19	7/8
1/4	3/4	1.82	0.60	0.19	1-1/16
5/16	1/8	1.34	0.64	0.19	9/16
5/16	1/4	1.52	0.64	0.25	9/16
5/16	3/8	1.54	0.64	0.25	11/16
3/8	1/8	1.39	0.66	0.19	5/8
3/8	1/4	1.57	0.66	0.28	5/8
3/8	3/8	1.57	0.66	0.28	11/16
3/8	1/2	1.82	0.66	0.28	7/8
3/8	3/4	1.88	0.66	0.28	1-1/16
1/2	1/8	1.53	0.90	0.19	13/16
1/2	1/4	1.71	0.90	0.28	13/16
1/2	3/8	1.71	0.90	0.38	13/16
1/2	1/2	1.93	0.90	0.41	7/8
1/2	3/4	1.99	0.90	0.41	1-1/16
1/2	1	2.25	0.90	0.41	1-3/8
5/8	3/8	1.74	0.96	0.38	15/16
5/8	1/2	1.93	0.96	0.47	15/16
5/8	3/4	1.99	0.96	0.50	1-1/16
3/4	1/2	1.99	0.96	0.47	1-1/16
3/4	3/4	1.99	0.96	0.62	1-1/16
3/4	1	2.25	0.96	0.62	1-3/8
7/8	3/4	1.99	1.02	0.62	1-3/16
7/8	1	2.25	1.02	0.72	1-3/8
1	1/2	2.26	1.23	0.47	1-3/8
1	3/4	2.26	1.23	0.62	1-3/8
1	1	2.45	1.23	0.88	1-3/8

Dimensions for reference only, subject to change.

MALE CONNECTOR

DIMENSIONS

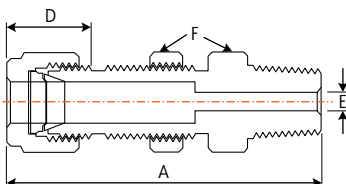


Tube O.D.	NPT Thread	A	D	E	F
Millimetres					
6	1/8	32.80	15.30	4.80	14
6	1/4	37.90	15.30	4.80	14
6	3/8	38.40	15.30	4.80	18
6	1/2	44.70	15.30	4.80	22
8	1/8	34.20	16.20	4.80	15
8	1/4	38.70	16.20	6.40	15
8	3/8	39.30	16.20	6.40	18
10	1/8	36.30	17.20	4.80	18
10	1/4	40.90	17.20	7.90	18
10	3/8	40.90	17.20	7.90	18
10	1/2	46.50	17.20	7.90	22
12	1/4	43.40	22.80	7.10	22
12	3/8	43.40	22.80	9.50	22
12	1/2	49.00	22.80	9.50	22
12	3/4	50.50	22.80	9.50	27
16	3/8	44.10	24.40	9.50	24
16	1/2	49.00	24.40	11.90	24
16	3/4	50.50	24.40	12.70	27
18	1/2	50.50	24.40	11.90	27
18	3/4	50.50	24.40	15.10	27
20	1/2	52.30	26.00	11.90	30
20	3/4	52.30	26.00	15.90	30
22	3/4	52.30	26.00	15.90	30
22	1	57.10	26.00	18.30	35
25	3/4	57.50	31.30	15.90	35
25	1	62.30	31.30	21.80	35

Dimensions for reference only, subject to change.

BULKHEAD MALE CONNECTOR

DIMENSIONS

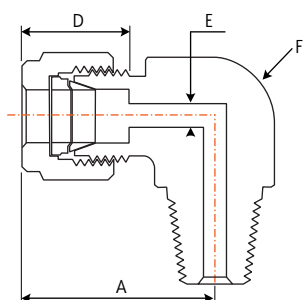


Tube O.D.	NPT Thread	A	D	E	F	Panel Hole Size	Max. Panel Thickness
Inches							
1/8	1/8	1.83	0.50	0.09	12	21/64	0.50
1/4	1/8	1.95	0.60	0.19	5/8	29/64	0.40
1/4	1/4	2.13	0.60	0.19	5/8	29/64	0.40
3/8	1/4	2.26	0.66	0.28	3/4	37/64	0.44
3/8	3/8	2.26	0.66	0.28	3/4	37/64	0.44
3/8	1/2	2.51	0.66	0.28	7/8	37/64	0.44
1/2	3/8	2.49	0.90	0.38	15/16	49/64	0.50
1/2	1/2	2.71	0.90	0.41	15/16	49/64	0.50
Millimetres							
6	1/4	53.60	15.30	4.80	16	11.5	10.20
12	1/2	68.80	9.50	9.50	24	19.5	12.70

Dimensions for reference only, subject to change.

MALE ELBOW

DIMENSIONS



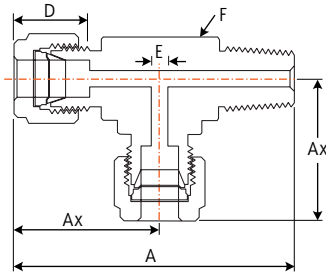
Tube O.D.	NPT Thread	A	D	E	F
Inches					
1/8	1/16	0.93	0.50	0.09	7/16
1/8	1/8	0.93	0.50	0.09	7/16
1/8	1/4	0.97	0.50	0.09	1/2
1/4	1/8	1.06	0.60	0.19	1/2
1/4	1/4	1.06	0.60	0.19	1/2
1/4	3/8	1.17	0.60	0.19	11/16
1/4	1/2	1.25	0.60	0.19	13/16
5/16	1/8	1.13	0.64	0.19	9/16
5/16	1/4	1.13	0.64	0.25	9/16
5/16	3/8	1.20	0.64	0.25	11/16
3/8	1/8	1.20	0.66	0.19	5/8
3/8	1/4	1.20	0.66	0.28	5/8
3/8	3/8	1.20	0.66	0.28	11/16
3/8	1/2	1.31	0.66	0.28	13/16
3/8	3/4	1.46	0.66	0.28	1-1/16
1/2	1/4	1.42	0.90	0.28	13/16
1/2	3/8	1.42	0.90	0.38	13/16
1/2	1/2	1.42	0.90	0.41	13/16
1/2	3/4	1.57	0.90	0.41	1-1/16
5/8	3/8	1.50	0.96	0.38	15/16
5/8	1/2	1.50	0.96	0.47	15/16
5/8	3/4	1.57	0.96	0.50	1-1/16
3/4	1/2	1.57	0.96	0.47	1-1/16
3/4	3/4	1.57	0.96	0.62	1-1/16
7/8	3/4	1.76	1.02	0.62	1-3/8
1	3/4	1.93	1.23	0.62	1-3/8
1	1	1.93	1.23	0.88	1-3/8

Millimetres					Inches
6	1/8	27.00	15.30	4.80	1/2
6	1/4	27.00	15.30	4.80	1/2
6	3/8	29.80	15.30	4.80	11/16
6	1/2	31.80	15.30	4.80	13/16
8	1/4	28.80	16.20	6.40	9/16
8	1/2	32.60	16.20	6.40	13/16
10	1/4	31.50	17.20	7.10	11/16
10	3/8	31.50	17.20	7.90	11/16
10	1/2	33.50	17.20	7.90	13/16
12	1/4	36.00	22.80	7.10	13/16
12	3/8	36.00	22.80	9.50	13/16
12	1/2	36.00	22.80	9.50	13/16
12	3/4	39.80	22.80	9.50	1-1/16
16	3/8	38.00	24.40	9.50	15/16
16	1/2	38.00	24.40	11.90	15/16
18	1/2	39.80	24.40	11.90	1-1/16
18	3/4	39.80	24.40	15.10	1-1/16
20	1/2	44.60	26.00	11.90	1-3/8
20	3/4	44.60	26.00	15.90	1-3/8
22	3/4	44.60	26.00	15.90	1-3/8
22	1	44.60	26.00	18.30	1-3/8
25	3/4	49.10	31.30	15.90	1-3/8
25	1	49.10	31.30	21.80	1-3/8

Dimensions for reference only, subject to change.

MALE RUN TEE

DIMENSIONS



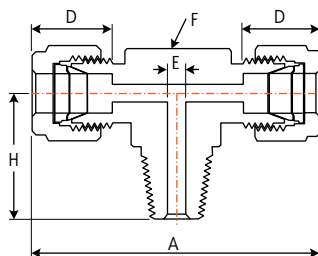
Tube O.D.	NPT Thread	A	Ax	D	E	F
Inches						
1/8	1/8	1.63	0.93	0.50	0.09	7/16
1/4	1/8	1.80	1.06	0.60	0.19	1/2
1/4	1/4	1.98	1.06	0.60	0.19	1/2
3/8	1/4	2.20	1.0	0.66	0.28	5/8
1/2	3/8	2.53	1.42	0.90	0.38	13/16
1/2	1/2	2.72	1.42	0.90	0.41	13/16
3/4	3/4	3.02	1.57	0.96	0.62	1-1/16

Millimetres						Inches
6	1/8	45.80	27.00	15.30	4.80	1/2
6	1/4	50.30	27.00	15.30	4.80	1/2
8	1/4	55.30	29.90	16.20	6.40	5/8
12	1/4	64.20	36.00	22.80	7.10	13/16
12	1/2	69.00	36.00	22.80	9.50	13/16

Dimensions for reference only, subject to change.

MALE BRANCH TEE

DIMENSIONS



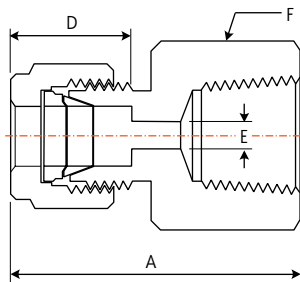
Tube O.D.	NPT Thread	A	D	E	F	H
Inches						
1/8	1/8	1.86	0.50	0.09	7/16	0.70
1/8	1/4	1.94	0.50	0.09	1/2	0.92
1/4	1/8	2.12	0.60	0.19	1/2	0.74
1/4	1/4	2.12	0.60	0.19	1/2	0.92
5/16	1/8	2.34	0.64	0.19	5/8	0.82
3/8	1/4	2.40	0.66	0.28	5/8	1.00
3/8	3/8	2.62	0.66	0.28	13/16	1.11
1/2	3/8	2.84	0.90	0.38	13/16	1.11
1/2	1/2	2.84	0.90	0.41	13/16	1.30
3/4	3/4	3.14	0.96	0.62	1-1/16	1.45

Millimetres						Inches
6	1/8	53.90	15.30	4.80	1/2	18.80
6	1/4	53.90	15.30	4.80	1/2	23.40
8	1/8	59.70	16.20	4.80	5/8	20.80
8	1/4	59.70	16.20	6.40	5/8	25.40
10	1/4	67.00	17.20	7.10	13/16	26.20
12	1/4	72.00	22.80	7.10	13/16	28.20
12	3/8	72.00	22.80	9.50	13/16	28.20
12	1/2	72.00	22.80	9.50	13/16	33.00

Dimensions for reference only, subject to change.

FEMALE CONNECTOR

DIMENSIONS



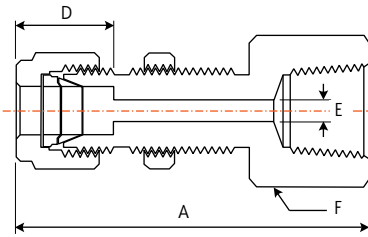
Tube O.D.	NPT Thread	A	D	E	F
Inches					
1/8	1/8	1.13	0.50	0.09	9/16
1/8	1/4	1.32	0.50	0.09	3/4
1/4	1/8	1.23	0.60	0.19	9/16
1/4	1/4	1.41	0.60	0.19	3/4
1/4	3/8	1.48	0.60	0.19	7/8
1/4	1/2	1.67	0.60	0.19	1-1/16
5/16	1/8	1.26	0.64	0.25	9/16
5/16	1/4	1.45	0.64	0.25	3/4
3/8	1/8	1.29	0.66	0.28	5/8
3/8	1/4	1.48	0.66	0.28	3/4
3/8	3/8	1.54	0.66	0.28	7/8
3/8	1/2	1.73	0.66	0.28	1-1/16
3/8	3/4	1.88	0.66	0.28	1-5/16
1/2	1/4	1.59	0.90	0.41	13/16
1/2	3/8	1.65	0.90	0.41	7/8
1/2	1/2	1.84	0.90	0.41	1-1/16
1/2	3/4	1.90	0.90	0.41	1-5/16
5/8	3/8	1.65	0.96	0.50	15/16
5/8	1/2	1.84	0.96	0.50	1-1/16
3/4	1/2	1.84	0.96	0.62	1-1/16
3/4	3/4	1.90	0.96	0.62	1-5/16
7/8	3/4	1.96	1.02	0.72	1-5/16
1	3/4	2.10	1.23	0.88	1-3/8
1	1	2.45	1.23	0.88	1-5/8

Millimetres					
6	1/8	31.30	15.30	4.80	14
6	1/4	35.80	15.30	4.80	19
6	3/8	37.60	15.30	4.80	22
6	1/2	42.50	15.30	4.80	27
8	1/4	37.00	16.20	6.40	19
8	3/8	38.50	16.20	6.40	22
8	1/2	43.30	16.20	6.40	27
10	1/4	37.80	17.20	7.90	19
10	3/8	39.40	17.20	7.90	22
10	1/2	44.20	17.20	7.90	27
12	1/4	40.30	22.80	9.50	22
12	3/8	41.90	22.80	9.50	22
12	1/2	46.70	22.80	9.50	27
20	1/2	47.90	26.00	15.90	30
20	3/4	49.70	26.00	15.90	35
22	3/4	49.70	26.00	18.30	35
22	1	57.90	26.00	18.30	41
25	3/4	53.40	31.30	21.80	35
25	1	62.30	31.30	21.80	41

Dimensions for reference only, subject to change.

BULKHEAD FEMALE CONNECTOR

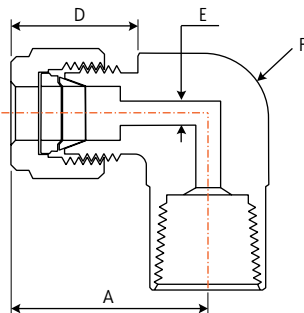
DIMENSIONS



Tube O.D.	NPT Thread	A	D	E	F	Panel Hole Size	Max. Panel Thickness
Inches							
1/8	1/8	1.76	0.50	0.09	9/16	21/64	0.50
1/4	1/8	1.85	0.60	0.19	5/8	29/64	0.40
1/4	1/4	2.04	0.60	0.19	3/4	29/64	0.40
3/8	1/4	2.17	0.66	0.28	3/4	37/64	0.44
1/2	3/8	2.43	0.90	0.41	15/16	49/64	0.50
1/2	1/2	2.62	0.90	0.41	1-1/16	49/64	0.50

Millimetres							
6	1/4	51.80	15.30	4.80	19	11.50	10.20
12	1/2	66.50	22.80	9.50	27	19.50	12.70

FEMALE ELBOW



DIMENSIONS

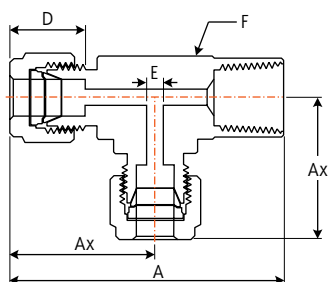
Tube O.D.	NPT Thread	A	D	E	F
Inches					
1/8	1/8	0.97	0.50	0.09	1/2
1/8	1/4	1.08	0.50	0.09	11/16
1/4	1/8	1.06	0.60	0.19	1/2
1/4	1/4	1.17	0.60	0.19	11/16
1/4	3/8	1.25	0.60	0.19	13/16
1/4	1/2	1.36	0.60	0.19	1
5/16	1/8	1.13	0.64	0.25	9/16
5/16	1/4	1.20	0.64	0.25	11/16
3/8	1/8	1.20	0.66	0.28	5/8
3/8	1/4	1.23	0.66	0.28	11/16
3/8	3/8	1.31	0.66	0.28	13/16
3/8	1/2	1.42	0.66	0.28	1
1/2	1/4	1.42	0.90	0.41	13/16
1/2	3/8	1.42	0.90	0.41	13/16
1/2	1/2	1.53	0.90	0.41	1
5/8	3/8	1.50	0.96	0.50	15/16
5/8	1/2	1.57	0.96	0.50	1-1/16
3/4	1/2	1.57	0.96	0.62	1-1/16
3/4	3/4	1.76	0.96	0.62	1-3/8
7/8	3/4	1.76	1.02	0.72	1-3/8
1	3/4	1.93	1.23	0.88	1-3/8
1	1	2.11	1.23	0.88	1-11/16

Millimetres					Inches
6	1/8	27.00	15.30	4.80	1/2
6	1/4	29.80	15.30	4.80	1/16
6	1/2	34.60	15.30	4.80	1
8	1/4	30.60	16.20	6.40	11/16
10	1/4	33.50	17.20	7.90	13/16
12	1/4	36.00	22.80	9.50	13/16
12	1/2	38.80	22.80	9.50	1
16	1/2	39.50	24.40	12.70	1-1/16

Dimensions for reference only, subject to change.

FEMALE RUN TEE

DIMENSIONS

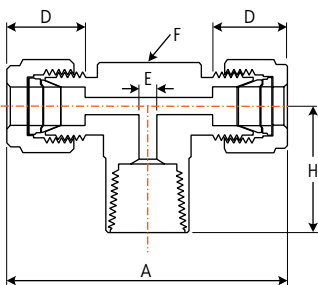


Tube O.D.	NPT Thread	A	Ax	D	E	F
Inches						
1/8	1/8	1.72	0.97	0.50	0.09	1/2
1/4	1/8	1.81	1.06	0.60	0.19	1/2
1/4	1/4	2.05	1.17	0.60	0.19	11/16
3/8	1/4	2.11	1.23	0.66	0.28	11/16
1/2	3/8	2.30	1.42	0.90	0.41	13/16
1/2	1/2	2.69	1.57	0.90	0.41	1-1/16
3/4	3/4	3.01	1.76	0.96	0.62	1-3/8
Millimetres						Inches
6	1/8	46.00	27.00	15.30	4.80	1/2
6	1/4	52.10	29.80	15.30	4.80	11/16
8	1/8	48.90	29.90	16.20	6.40	5/8
8	1/4	53.00	30.60	16.20	6.40	11/16
10	1/4	55.90	33.50	17.20	7.90	13/16
12	1/4	58.40	36.00	22.80	9.50	13/16
12	3/8	58.40	36.00	22.80	10.30	13/16

Dimensions for reference only, subject to change.

FEMALE BRANCH TEE

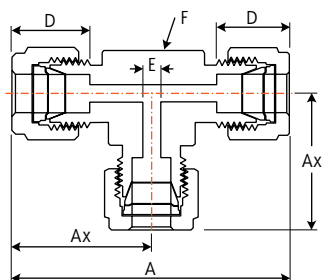
DIMENSIONS



Tube O.D.	NPT Thread	A	D	E	F	H
Inches						
1/8	1/8	1.94	0.50	0.09	1/2	0.75
1/4	1/8	2.12	0.60	0.19	1/2	0.75
1/4	1/4	2.34	0.60	0.19	11/16	0.88
3/8	1/4	2.46	0.66	0.28	11/16	0.88
1/2	1/4	2.84	0.90	0.41	13/16	0.88
1/2	3/8	2.84	0.90	0.41	13/16	0.88
1/2	1/2	3.06	0.90	0.41	1	1.12
1	3/4	3.86	1.23	0.88	1-3/8	1.25
1	1	4.22	1.23	0.88	1-11/16	1.50
Millimetres						Inches
6	1/8	53.90	15.30	4.80	1/2	19.00
6	1/4	59.50	15.30	4.80	11/16	22.40
8	1/8	59.70	16.20	6.40	5/8	19.00
8	1/4	61.20	16.20	6.40	11/16	22.40
10	1/4	67.00	17.20	7.90	13/16	22.40
12	1/4	72.00	22.80	9.50	13/16	22.40
12	3/8	72.00	22.80	9.50	13/16	22.40

Dimensions for reference only, subject to change.

UNION TEE

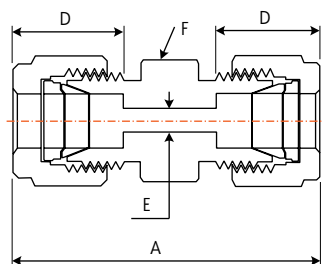


DIMENSIONS

Tube O.D.	A	Ax	D	E	F
Inches					
1/8	1.76	0.88	0.50	0.09	3/8
1/4	2.12	1.06	0.60	0.19	1/2
5/16	2.34	1.17	0.64	0.25	5/8
3/8	2.40	1.20	0.66	0.28	5/8
1/2	2.84	1.42	0.90	0.41	13/16
5/8	3.03	1.53	0.96	0.50	1
3/4	3.14	1.57	0.96	0.62	1-1/16
7/8	3.52	1.76	1.02	0.72	1-3/8
1	3.86	1.93	1.23	0.88	1-3/8

	Millimetres				Inches
6	53.90	27.00	15.30	4.80	1/2
8	59.70	29.90	16.20	6.40	5/8
10	63.00	31.50	17.20	7.90	11/16
12	72.00	36.00	22.80	9.50	13/16
15	77.60	38.80	24.40	11.90	1
16	77.60	38.80	24.40	12.70	1
18	79.60	39.80	24.40	15.10	1-1/16
20	89.30	44.60	26.00	15.90	1-3/8
22	89.30	44.60	26.00	18.30	1-3/8
25	98.30	49.10	31.30	21.80	1-3/8

UNION



DIMENSIONS

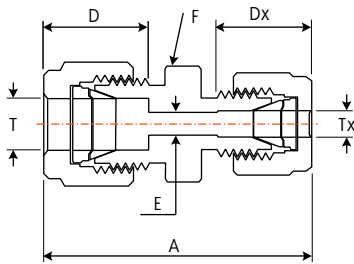
Tube O.D.	A	D	E	F
Inches				
1/8	1.40	0.50	0.09	7/16
1/4	1.61	0.60	0.19	1/2
5/16	1.69	0.64	0.25	9/16
3/8	1.77	0.66	0.28	5/8
1/2	2.02	0.90	0.41	13/16
5/8	2.05	0.96	0.50	16/15
3/4	2.11	0.96	0.62	1-1/16
7/8	2.17	1.02	0.72	1-3/16
1	2.55	1.23	0.88	1-3/8

	Millimetres			
6	41.00	15.30	4.80	14
8	43.20	16.20	6.40	15
10	46.20	17.20	7.90	18
12	51.20	22.80	9.50	22
14	52.00	24.40	11.10	24
15	52.00	24.40	11.90	24
16	52.00	24.40	12.70	24
18	53.50	24.40	15.10	27
20	55.00	26.00	15.90	30
22	55.00	26.00	18.30	30
25	65.00	31.30	21.80	35

Dimensions for reference only, subject to change.

REDUCING UNION

DIMENSIONS

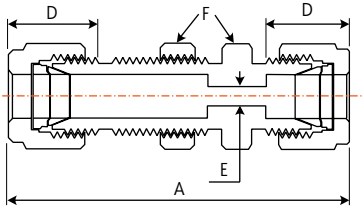


T Tube O.D.	Tx Tube O.D.	A	D	Dx	E	F
Inches						
1/4	1/8	1.52	0.60	0.50	0.09	1/2
5/16	1/8	1.56	0.64	0.50	0.09	9/16
5/16	1/4	1.66	0.64	0.60	0.19	9/16
3/8	1/16	1.44	0.66	0.34	0.05	5/8
3/8	1/8	1.61	0.66	0.50	0.09	5/8
3/8	1/4	1.70	0.66	0.60	0.19	5/8
3/8	5/16	1.74	0.66	0.64	0.25	5/8
1/2	1/8	1.78	0.90	0.50	0.09	13/16
1/2	1/4	1.85	0.90	0.60	0.19	13/16
1/2	3/8	1.91	0.90	0.66	0.28	13/16
5/8	3/8	1.94	0.96	0.66	0.28	15/16
5/8	1/2	2.05	0.96	0.90	0.41	15/16
3/4	1/4	1.94	0.96	0.60	0.19	1-1/16
3/4	3/8	2.00	0.96	0.66	0.28	1-1/16
3/4	1/2	2.11	0.96	0.90	0.41	1-1/16
3/4	5/8	2.11	0.96	0.96	0.50	1-1/16
1	1/2	2.38	1.23	0.90	0.41	1-3/8
1	3/4	2.38	1.23	0.96	0.62	1-3/8
Millimetres						
6	1/8	38.50	15.30	12.80	2.40	14
6	1/4	41.00	15.30	15.30	4.80	14
6	5/16	42.30	15.30	16.20	4.80	14
8	1/4	42.30	16.20	15.30	4.80	15
10	1/8	41.80	17.20	12.80	2.40	18
10	1/4	44.50	17.20	15.30	4.80	18
10	5/16	45.10	17.20	16.20	6.40	18
10	3/8	45.90	17.20	16.90	7.10	18
12	5/16	47.80	22.80	16.20	6.40	22
12	3/8	48.40	22.80	16.90	7.10	22
12	1/2	51.20	22.80	22.80	9.50	22
15	1/2	52.00	24.40	22.80	10.30	24
16	5/8	52.00	24.40	24.40	12.70	24
18	3/4	53.50	24.40	24.40	15.10	27

Dimensions for reference only, subject to change.

BULKHEAD UNION

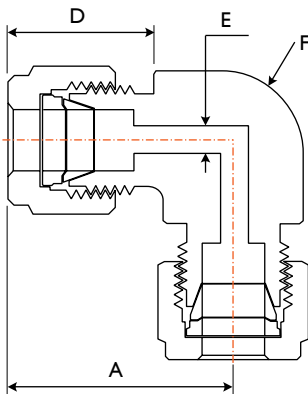
DIMENSIONS



Tube O.D.	A	D	E	F	Panel Hole Drill Size	Max. Panel Thickness
Inches						
1/8	2.02	0.50	0.09	1/2	21/64	0.50
1/4	2.27	0.60	0.19	5/8	29/64	0.40
5/16	2.39	0.64	0.25	11/16	33/64	0.44
3/8	2.45	0.66	0.28	3/4	37/64	0.44
1/2	2.80	0.90	0.41	15/16	49/64	0.50
5/8	2.86	0.96	0.50	1-1/16	57/64	0.50
3/4	3.11	0.96	0.62	1-3/16	11/64	0.66
1	3.77	1.23	0.88	1-5/8	1-21/64	0.75
Millimetres						
6	57.70	15.30	4.80	16	11.50	10.20
8	61.00	16.20	6.40	18	13.10	11.20
10	63.70	17.20	7.90	22	16.30	11.20
12	71.00	22.80	9.50	24	19.50	12.70
14	72.50	24.40	11.10	27	22.50	12.70
15	72.50	24.40	11.90	27	22.80	12.70
16	72.50	24.40	12.70	27	22.80	12.70
18	78.90	24.40	15.10	30	26.00	16.80
20	84.50	26.00	15.90	35	29.00	19.00

UNION ELBOW

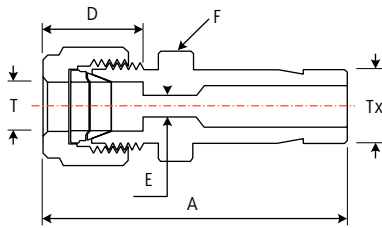
DIMENSIONS



Tube O.D.	A	D	E	F
Inches				
1/8	0.88	0.50	0.09	3/8
1/4	1.06	0.60	0.19	1/2
5/16	1.13	0.64	0.25	9/16
3/8	1.20	0.66	0.25	5/8
1/2	1.42	0.90	0.41	13/16
5/8	1.50	0.96	0.50	15/16
3/4	1.57	0.96	0.62	1-1/16
7/8	1.76	1.02	0.72	1-3/8
1	1.93	1.23	0.88	1-3/8
Millimetres				Inches
6	27.00	15.30	4.80	1/2
8	28.80	16.20	6.40	9/16
10	31.50	17.20	7.90	11/16
12	36.00	22.80	9.50	13/16
15	38.00	24.40	11.90	15/16
16	8.00	24.40	12.70	15/16
18	39.80	24.40	15.10	1-1/16
20	44.60	26.00	15.90	1-3/8
22	44.60	26.00	18.30	1-3/8
25	49.10	31.30	21.80	1-3/8

Dimensions for reference only, subject to change.

REDUCER



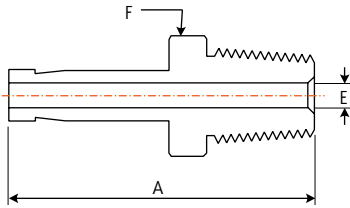
DIMENSIONS

T Tube O.D.	Tx Tube O.D.	A	D	E	F
Inches					
1/8	1/8	1.32	0.50	0.08	7/16
1/8	3/16	1.35	0.50	0.09	7/16
1/8	1/4	1.42	0.50	0.09	7/16
1/8	3/8	1.48	0.50	0.09	7/16
1/8	1/2	1.74	0.50	0.09	9/16
3/16	1/8	1.37	0.54	0.08	7/16
3/16	1/4	1.46	0.54	0.12	7/16
1/4	1/8	1.45	0.60	0.08	1/2
1/4	3/16	1.48	0.60	0.12	1/2
1/4	1/4	1.54	0.60	0.17	1/2
1/4	5/16	1.57	0.60	0.19	1/2
1/4	3/8	1.60	0.60	0.19	1/2
1/4	1/2	1.82	0.60	0.19	9/16
1/4	3/4	1.88	0.60	0.19	13/16
5/16	1/4	1.87	0.64	0.25	9/16
5/16	3/8	1.65	0.64	0.25	9/16
3/8	1/4	1.63	0.66	0.17	5/8
3/8	3/8	1.70	0.66	0.27	5/8
3/8	1/2	1.91	0.66	0.28	5/8
3/8	3/4	1.98	0.66	0.28	13/16
1/2	1/4	1.77	0.90	0.17	13/16
1/2	3/8	1.84	0.90	0.27	13/16
1/2	1/2	2.06	0.90	0.37	13/16
1/2	3/4	2.12	0.90	0.41	13/16
1/2	1	2.37	0.90	0.41	1-1/16
5/8	3/4	2.15	0.96	0.50	15/16
5/8	7/8	2.21	0.96	0.50	15/16
5/8	1	2.40	0.96	0.50	1-1/16
3/4	1/2	2.15	0.96	0.37	1-11/16
3/4	1	2.46	0.96	0.62	1-11/16
Millimetres					
6	8	39.90	15.30	4.80	14
6	10	40.70	15.30	4.80	14
6	12	46.30	15.30	4.80	14
6	18	49.60	15.30	4.80	22
8	6	40.30	16.20	4.10	15
8	10	42.00	16.20	6.40	15
8	12	47.60	16.20	6.40	15
10	8	43.40	17.20	5.60	18
10	12	49.80	17.20	7.90	18
12	8	45.90	22.80	5.60	22
12	10	46.70	22.80	7.10	22
12	16	53.80	22.80	9.50	22
12	18	53.80	22.80	9.50	22
12	20	56.10	22.80	9.50	22
18	12	54.60	24.40	8.80	27
18	16	56.10	24.40	12.00	27

Dimensions for reference only, subject to change.

MALE ADAPTOR

DIMENSIONS

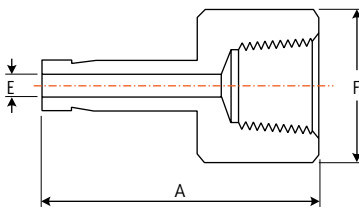


Tube O.D.	NPT Thread	A	E	F
Inches				
1/8	1/8	1.16	0.08	7/16
1/8	1/4	1.37	0.08	9/16
1/4	1/8	1.25	0.17	7/16
1/4	1/4	1.46	0.17	9/16
1/4	3/8	1.49	0.17	11/16
1/4	1/2	1.71	0.17	7/8
3/8	1/8	1.32	0.19	7/16
3/8	1/4	1.53	0.27	9/16
3/8	3/8	1.56	0.27	11/16
3/8	1/2	1.78	0.27	7/8
1/2	1/4	1.75	0.28	9/16
1/2	3/8	1.78	0.37	11/16
1/2	1/2	2.00	0.37	7/8

Millimetres				
6	1/8	32.80	4.10	12
6	1/4	38.10	4.10	14
8	1/4	39.10	5.60	14
10	1/4	39.90	7.10	14
10	3/8	40.60	7.10	18
10	1/2	46.20	7.10	22
12	1/4	46.50	7.10	16
12	1/2	52.10	8.80	22

FEMALE ADAPTOR

DIMENSIONS

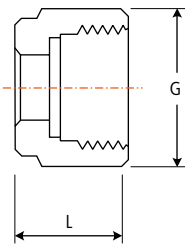


Tube O.D.	NPT Thread	A	E	F
Inches				
1/8	1/8	1.24	0.08	9/16
1/8	1/4	1.39	0.08	3/4
1/4	1/8	1.30	0.17	9/16
1/4	1/4	1.46	0.17	3/4
1/4	3/8	1.55	0.17	7/8
1/4	1/2	1.79	0.17	1-1/16
3/8	1/8	1.35	0.27	9/16
3/8	1/4	1.50	0.27	3/4
3/8	3/8	1.59	0.27	7/8
3/8	1/2	1.84	0.27	1-1/16
1/2	1/4	1.71	0.37	3/4
1/2	3/8	1.79	0.37	7/8
1/2	1/2	2.05	0.37	1-1/16

Millimetres				
6	1/8	32.50	4.10	14
6	1/4	37.10	4.10	19
8	1/4	37.60	5.60	19
10	1/4	38.10	7.10	19
10	3/8	40.10	7.10	22
10	1/2	46.70	7.10	27
12	1/4	43.70	8.80	19
12	1/2	52.30	8.80	27

Dimensions for reference only, subject to change.

NUT

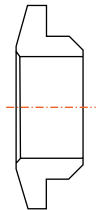


DIMENSIONS

Tube O.D.	G	L
Inches		
1/8	7/16	0.47
1/4	9/16	0.50
5/16	5/8	0.53
3/8	11/16	0.56
1/2	7/8	0.69
5/8	1	0.69
3/4	1-1/8	0.69
7/8	1-1/4	0.69
1	1-1/4	0.81

Tube O.D.	G	L
Millimetres		
6	14	12.70
8	16	13.50
10	19	15.10
12	22	17.40
14	25	17.40
15	25	17.40
16	25	17.40
18	30	17.40
20	32	17.40
22	32	17.40
25	38	20.60

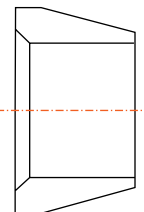
BACK FERRULE



DIMENSIONS

Tube O.D.	Tube O.D.
Inches	Millimetres
1/8	6
1/4	8
5/16	10
3/8	12
1/2	14
5/8	15
3/4	16
7/8	18
1	20
	22
	25

FRONT FERRULE

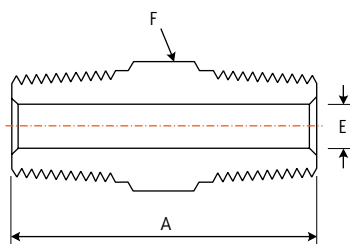


DIMENSIONS

Tube O.D.	Tube O.D.
Inches	Millimetres
1/8	6
1/4	8
5/16	10
3/8	12
1/2	14
5/8	15
3/4	16
7/8	18
1	20
	22
	25

Dimensions for reference only, subject to change.

HEX NIPPLE



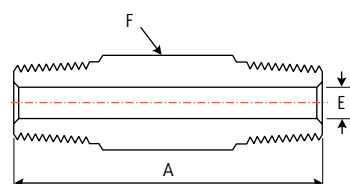
DIMENSIONS

Male NPT Threads

Part Size	A	E	F
Inches			
1/8	1.01	0.19	7/16
1/4	1.40	0.28	9/16
3/8	1.43	0.38	11/16
1/2	1.84	0.47	7/8
3/4	1.84	0.62	1-1/16
1	2.32	0.88	1-3/8

Dimensions for reference only, subject to change.

HEX LONG NIPPLE



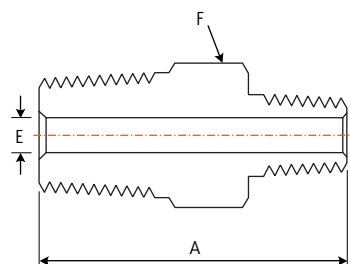
DIMENSIONS

Male NPT Threads

Pipe Size	A					E	F
	Available Lengths, inch						
	1.50	2.00	2.50	3.00	4.00		
Inches							
1/8	v	v	v	v	-	0.19	7/16
1/4	v	v	v	v	v	0.28	9/16
3/8	v	v	v	v	v	0.38	11/16
1/2	-	v	-	v	v	0.47	7/8
3/4	-	v	-	v	v	0.62	1-1/16
1	-	-	-	v	v	0.88	1-3/8

Dimensions for reference only, subject to change.

HEX REDUCING NIPPLE



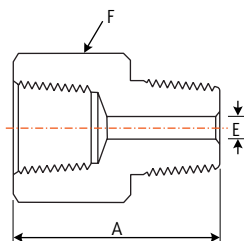
DIMENSIONS

Male NPT Threads

Pipe Size	Pipe Size	A	E	F
Inches				
1/4	1/8	1.22	0.19	9/16
3/8	1/8	1.25	0.19	11/16
3/8	1/4	1.43	0.28	11/16
1/2	1/8	1.47	0.19	7/8
1/2	1/4	1.65	0.28	7/8
1/2	3/8	1.65	0.38	7/8
3/4	1/4	1.65	0.28	1-1/16
3/4	1/2	1.84	0.47	1-1/16
1	1/2	2.13	0.47	1-3/8
1	3/4	2.13	0.62	1-3/8

Dimensions for reference only, subject to change.

ADAPTOR



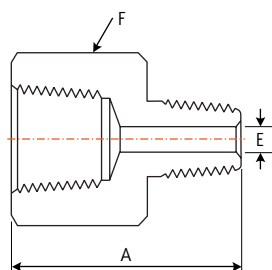
DIMENSIONS

Female to Male NPT Threads

Part Size	A	E	F
Inches			
1/8	1.10	0.19	9/16
1/4	1.40	0.28	3/4
3/8	1.51	0.38	7/8
1/2	1.94	0.47	1-1/16
3/4	2.02	0.62	1-5/16
1	2.28	0.88	1-5/8

Dimensions for reference only, subject to change.

REDUCING ADAPTOR



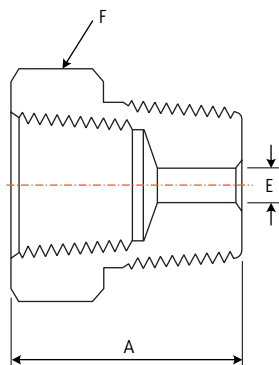
DIMENSIONS

Female to Male NPT Threads

Pipe Size	Pipe Size	A	E	F
Inches				
1/4	1/8	1.26	0.19	3/4
3/8	1/8	1.33	0.19	7/8
3/8	1/4	1.50	0.28	7/8
1/2	1/8	1.58	0.19	1-1/16
1/2	1/4	1.76	0.28	1-1/16
1/2	3/8	1.75	0.38	1-1/16
3/4	1/4	1.85	0.28	1-5/16
3/4	3/8	1.82	0.38	1-5/16
3/4	1/2	2.02	0.47	1-5/16
1	1/4	1.96	0.28	1-5/8
1	1/2	2.16	0.47	1-5/8
1	3/4	2.17	0.62	1-5/8

Dimensions for reference only, subject to change.

REDUCING BUSHING



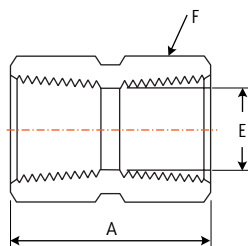
DIMENSIONS

Male to Female NPT Threads

Male Pipe Size	Female Pipe Size	A	E	F
Inches				
1/4	1/8	1.06	0.28	9/16
3/8	1/8	0.86	0.34	11/16
3/8	1/4	1.19	0.38	3/4
1/2	1/8	1.08	0.34	7/8
1/2	1/4	1.08	0.45	7/8
1/2	3/8	1.41	0.47	7/8
3/4	1/4	1.08	0.45	1-1/16
3/4	3/8	1.08	0.59	1-1/16
3/4	1/2	1.63	0.62	1-1/16
1	1/4	1.37	0.45	1-3/8
1	3/8	1.37	0.59	1-3/8
1	1/2	1.37	0.73	1-3/8
1	3/4	1.85	0.88	1-3/8

Dimensions for reference only, subject to change.

HEX COUPLING



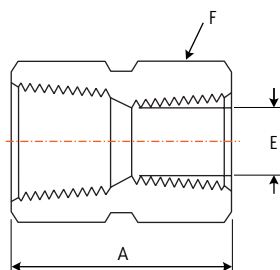
DIMENSIONS

Female NPT Threads

Part Size	A	E	F
Inches			
1/8	0.81	0.34	9/16
1/4	1.19	0.45	3/4
3/8	1.31	0.59	7/8
1/2	1.56	0.73	1-1/16
3/4	1.62	0.94	1-5/16
1	2.00	1.17	1-5/8

Dimensions for reference only, subject to change.

HEX REDUCING COUPLING



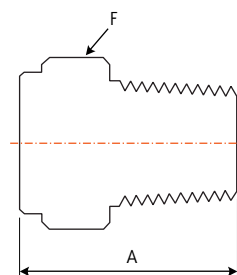
DIMENSIONS

Female NPT Threads

Pipe Size	Pipe Size	A	E	F
Inches				
1/4	1/8	1.22	0.34	3/4
3/8	1/4	1.38	0.45	7/8
1/2	1/8	1.56	0.34	1-1/16
1/2	1/4	1.75	0.45	1-1/16
1/2	3/8	1.78	0.59	1-1/16
3/4	1/4	1.81	0.45	1-5/16
3/4	1/2	2.06	0.73	1-5/16
1	1/2	2.19	0.73	1-5/8
1	3/4	2.25	0.94	1-5/8

Dimensions for reference only, subject to change.

PIPE PLUG



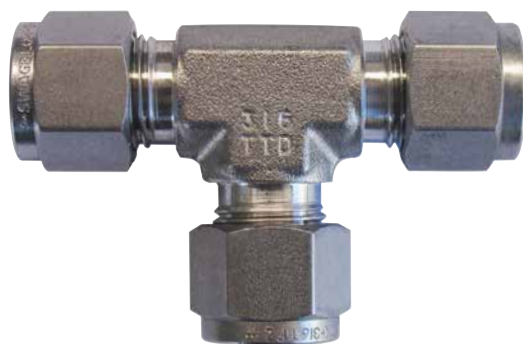
DIMENSIONS

Male NPT Threads

Part Size	A	F
Inches		
1/8	0.75	7/16
1/4	0.96	9/16
3/8	0.99	11/16
1/2	1.21	7/8
3/4	1.21	1-1/16
1	1.50	1/8

Dimensions for reference only, subject to change.

This image shows a full page of blank graph paper. The grid consists of thin, light gray horizontal and vertical lines that intersect to form small squares across the entire page. There are no margins, text, or other markings present.







**AUSTRALIAN
PIPELINE VALVE®**

**COMPLETE
PRODUCT LINE**

***“Australian Pipeline Valve
produces isolation,
control and flow reversal
protection products for
severe and critical service
media in utility, steam,
pipelines, oil & gas
and process industries.
APV valves and pipeline
products form the most
competitive portfolio
in the market.”***



SUPER·CHECK®



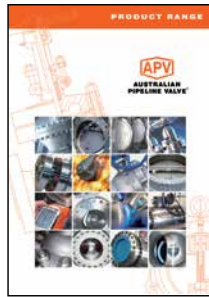
TORQTURN®

TWIN-LOK®

UNIFLO®



AUSTRALIAN PIPELINE VALVE BRAND RANGE - CATALOGUES



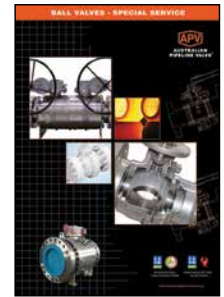
Product Brochure



Ball Valves Floating
& Trunnion Mounted



Ball Valves
Floating Small Bore



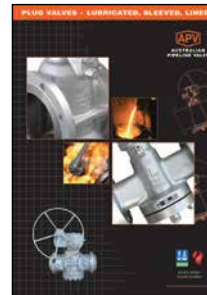
Ball Valves
Special Service



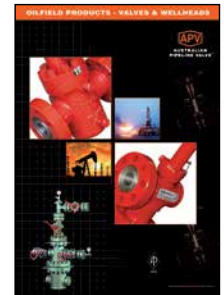
Gate, Globe & Check Valves -
Cast Steel



Gate, Globe & Check Valves -
Forged Steel



Plug Valves Lubricated, Sleeved
& Lined

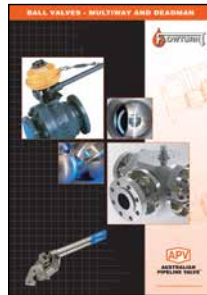


Oilfield Products
Valves & Wellheads

APV FAMILY OF BRANDS RANGE - CATALOGUES



Diamond Gear
Gearboxes



Flowturn Ball Valves Multiway
& Deadman



Flowturn Gate, Globe & Check
Valves



Flowturn
Instrument Valves



Flowturn Strainers
& Sight Glasses



Steamco
Steam Valves



Supercheck
Wafer Check Valves



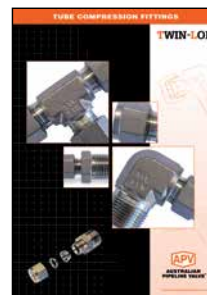
Superseal
Butterfly Valves



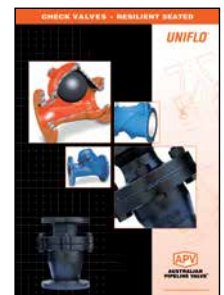
Superseal
Industrial Ball Valves



Torqturn Actuators



TwinLok Tube Fittings



Uniflo Check Valves

Contact us for your local stockist/distributor



AUSTRALIAN PIPELINE VALVE®

ADELAIDE • BRISBANE • PERTH



www.australianpipelinevalve.com.au

LOCAL DISTRIBUTOR



QUALITY ASSURANCE AND CERTIFICATION

We are continually improving all facets of quality assurance. Full metallurgical and test certificates can be supplied.

We have endeavoured to provide a broad outline of our range and capabilities. Because we are continually developing new products for our customers this catalogue will, to some extent be incomplete. This catalogue is a general overview only, individual drawings and data sheets can be furnished on request.

If you have any requirement in the field of valves and fittings, please contact us for a prompt response. Continuous development of Australian Pipeline Valve products may necessitate changes in the design or manufacturing processes. Australian Pipeline Valve reserves the right to effect any such changes without prior notice.

