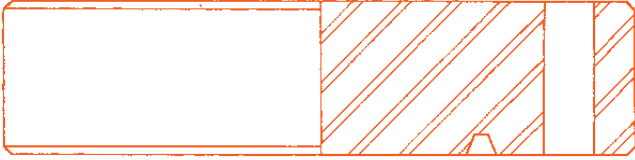
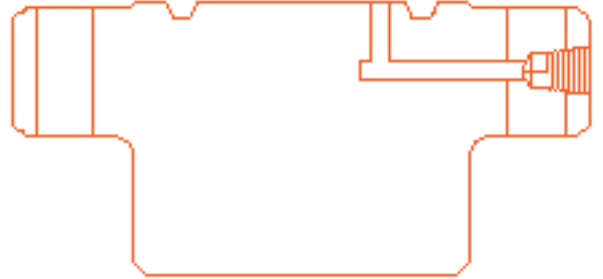


**TYPES OF API 6A/6B/BX FLANGES SPOOLS, ADAPTORS & CONNECTORS**

6B BLIND FLANGE (R/RX)



6BX TEST FLANGE



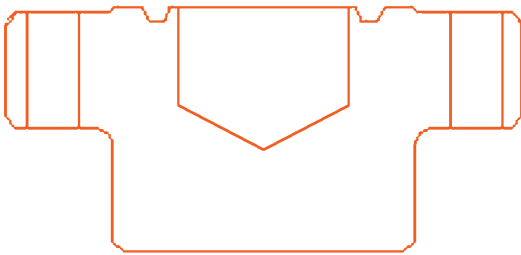
6BX BLIND FLANGE



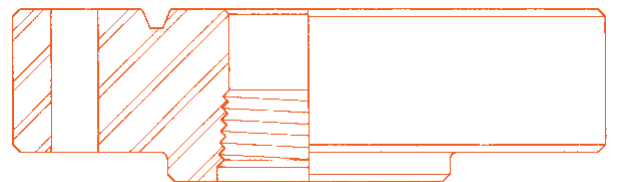
6B INSTRUMENT FLANGE / SPACER FLANGE



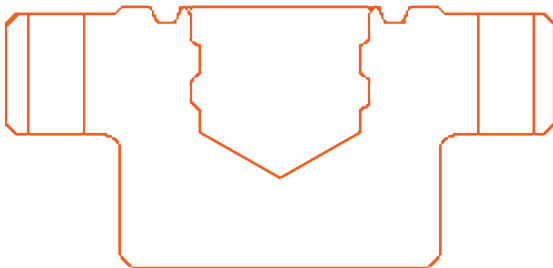
6BX BLIND FLANGE C/W FLUID CUSHION BORE



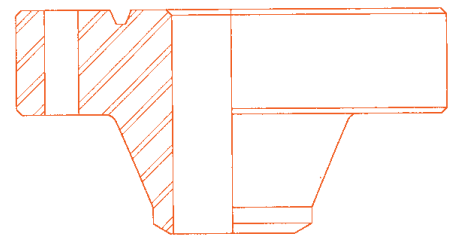
6B THREADED "COMPANION" FLANGE



LEAD FILLED TARGET FLANGE



R/RX/BX WELD NECK FLANGE

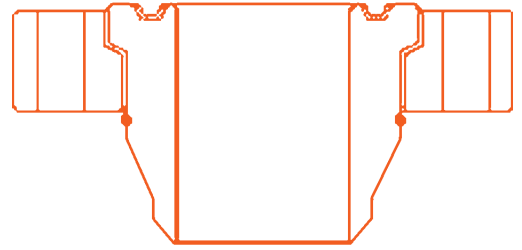


See Slide Rule and technical details on Weld Neck dimensions that satisfy API requirements go to the technical schedule of our website [www.australianpipelinevalve.com.au](http://www.australianpipelinevalve.com.au)

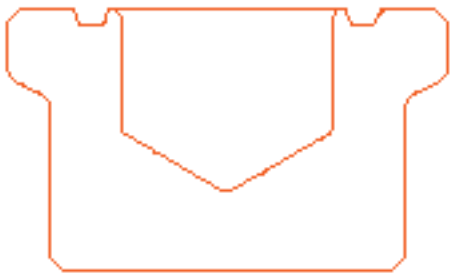
TEST FLANGE



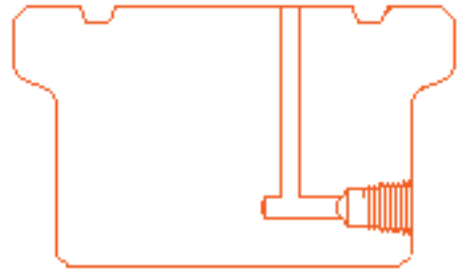
SWIVEL X FLANGE



BLIND HUB FLANGE C/W COUNTERBORE



TEST FLANGE HUB TYPE FLANGE



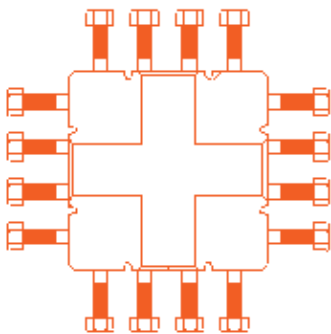
LEAD FILLED TARGET HUB FLANGE



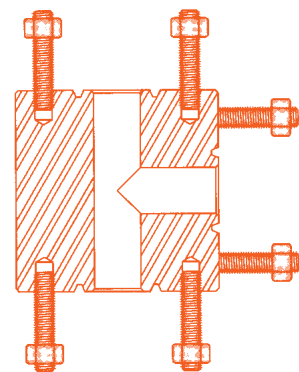
HUB FLANGE X WELD NECK



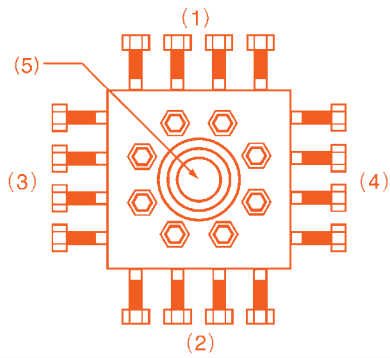
STUDDED (4 WAY) CROSS



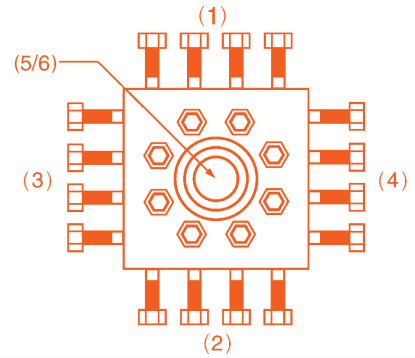
STUDDED (3 WAY) TEE



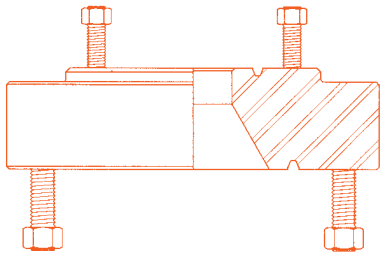
STUDDED (5WAY) CROSS FOR CHOKE MANIFOLD



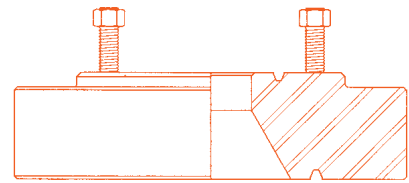
STUDDED (6WAY) CROSS FOR CHOKE MANIFOLD



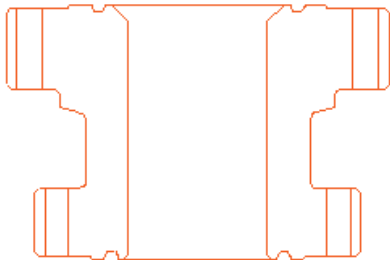
DOUBLE STUDDED ADAPTOR FLANGE (DSA)



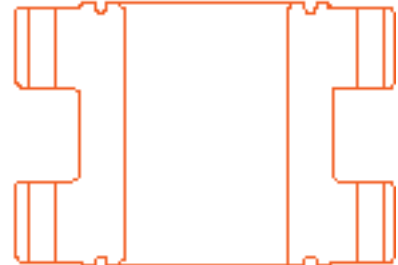
SINGLE STUDDED ADAPTOR FLANGE (SDA)



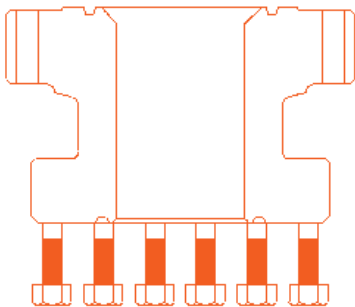
FLANGED ADAPTOR SPOOL



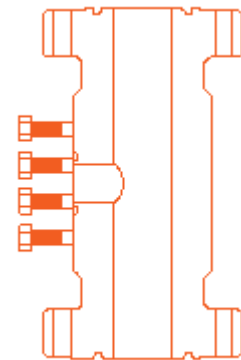
DOUBLE FLANGED SPACER SPOOL



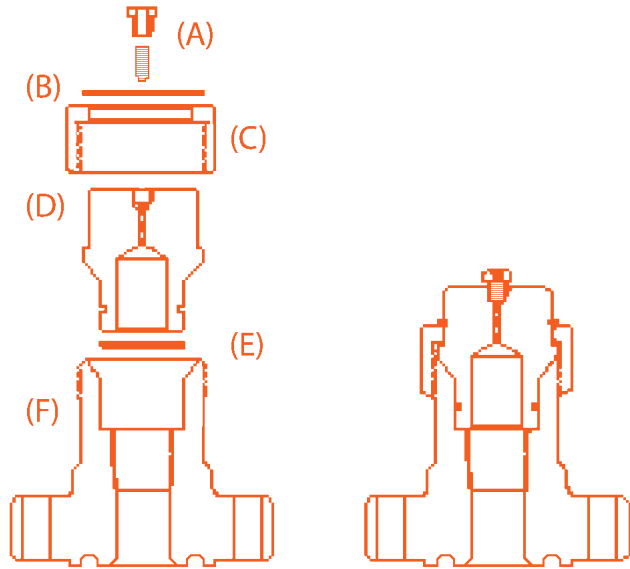
FLANGED END STUDDED ADAPTOR SPOOL



FLANGED END STUDDED SIDE TEE (FLOW TEE)



CHRISTMAS TREE CAP LUBRICATOR ADAPTOR TOP



EXPLODED

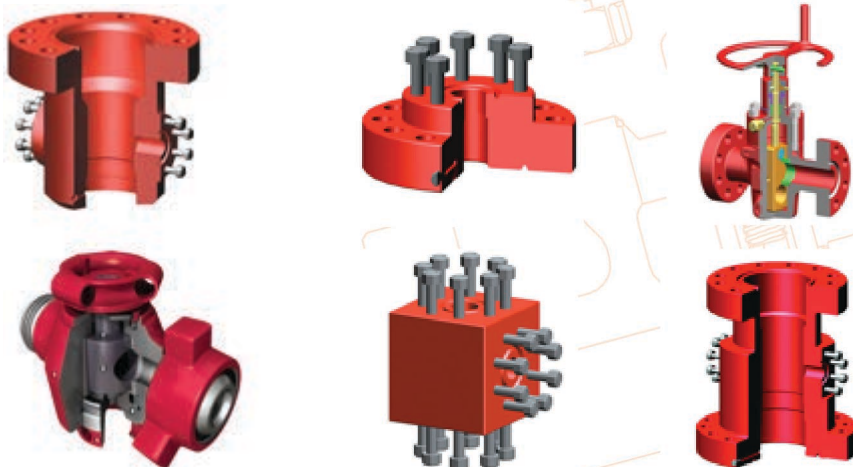
COMPLETE

- (A) - AUTOCLAVE PLUG
- (B) - RETAINER RING
- (C) - NUT

- (D) - BLANKING PLUG
- (E) - O-RING
- (F) - BODY WITH FEMALE CONNECTION

*If you find this website helpful, recommend us to your drilling manager, plant manager, engineers and purchasing staff when you purchase valves or wellhead equipment*

*Australian Pipeline Valve  
Short lead time manufacturer of API ball, check, gate and plug valves as well as chokes, christmas trees, and wellhead equipment  
[www.australianpipelinevalve.com.au](http://www.australianpipelinevalve.com.au)*



API6A gate valve JB